

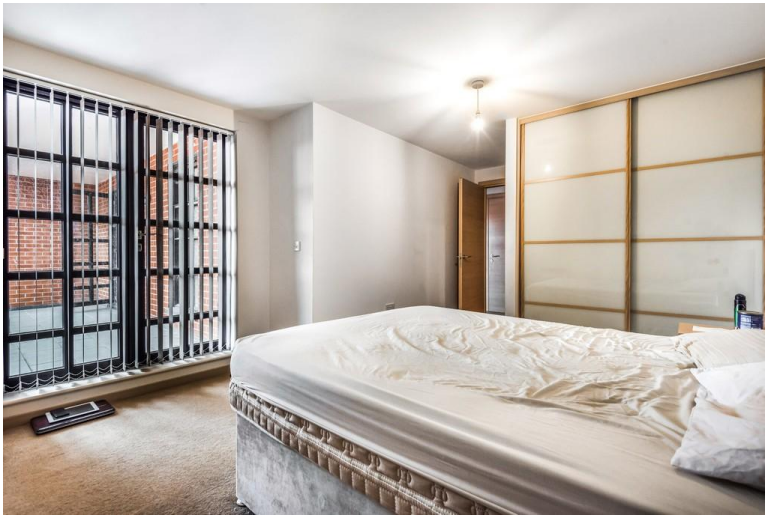


James *J* Laurence<sup>TM</sup>  
Sales and Lettings

APARTMENT 512, ST PAULS PLACE, 40 ST. PAULS  
SQUARE, JEWELLERY QUARTER, BIRMINGHAM CITY  
CENTRE, B3 1FQ      ASKING PRICE OF £280,000







**DESCRIPTION**

**\*\*EWS1 FORM GRANTED\*\*** A superb two-bedroom apartment situated on the fifth floor in the prestigious St. Pauls Place Development. This well-appointed apartment offers approximately 785 Sq. Ft. of internal accommodation with the additional benefit of a private balcony. This bright and spacious apartment briefly comprises of:- An entrance hall, open plan living & kitchen area, private balcony, master bedroom with an en-suite bathroom, guest bedroom, family bathroom and secure allocated parking.

The development also benefits from 24 hour concierge. This is a rare opportunity to procure a fantastic apartment in an incredibly popular development, in Birmingham's most popular area.

**ENTRANCE HALLWAY**

**OPEN PLAN LIVING & KITCHEN AREA**

20' 9" x 12' 0" (6.32m x 3.66m)

**PRIVATE BALCONY**

**MASTER BEDROOM**

18' 0" x 12' 2" (5.49m x 3.71m)

**EN-SUITE SHOWER ROOM**

**GUEST BEDROOM**

9' 10" x 9' 9" (3m x 2.97m)

**FAMILY BATHROOM**

**PARKING**

The property has one secure and allocated parking space.

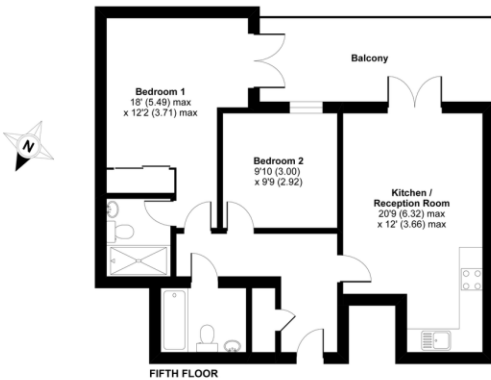
**AREA**

The property is located in the heart of Birmingham's Jewellery Quarter, on St Paul's Square and close to the canal towpaths.

The Jewellery Quarter is a designated conservation area and proposed World Heritage Site and is already a prestigious and highly desired part of Birmingham. It is experiencing further development as some of the old factories are converted into apartments, restaurants and shops. It is only a short distance to all that Birmingham City Centre has to offer including the Colmore Business District.

**St. Pauls Square, Birmingham, B3**

Approximate Area = 701 sq ft / 65.1 sq m  
For identification only - Not to scale



**FIFTH FLOOR**

