



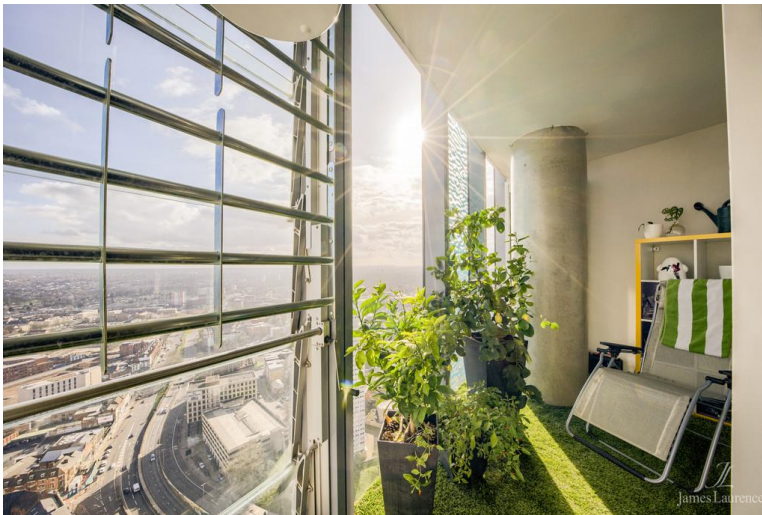
James *J* Laurence<sup>TM</sup>  
Sales and Lettings

APARTMENT 3603, BEETHAM TOWER, 10 HOLLOWAY  
CIRCUS QUEENSWAY, BIRMINGHAM CITY CENTRE, B1 1BY  
OFFERS OVER £395,000



*J*  
James Laurence





**DESCRIPTION**

**\*\*EWS1 FORM GRANTED\*\*** A stunning three bed room apartment located on the thirty sixth floor, spanning over 1248 Sq. Ft. in the sought after Beetham Tower development.

The apartment briefly comprises of:- An entrance hallway, open plan living area/fitted kitchen with full length curved glass windows from the lounge allowing for panoramic view, fantastic Cityscape views from the sky garden, master bedroom with en-suite shower room and walk in wardrobe, two further double bedrooms and family bathroom.

The property also benefits from having a secure underground automatic self parking garage and 24 hour concierge service and is in within close walking distance to Grand Central station.

A must view to avoid disappointment.

**ENTRANCE HALL**

**OPEN PLAN LIVING & KITCHEN AREA**

22' 8 (Max)" x 17' 0 (Max)" (6.91m x 5.18m)

**SKY GARDEN**

**MASTER BEDROOM**

12' 5" x 14' 0" (3.78m x 4.27m)

**WALK-IN-WARDROBE**

5' 1" x 7' 9" (1.55m x 2.36m)

**EN-SUITE**

7' 9" x 6' 9" (2.36m x 2.06m)

**SECOND BEDROOM**

12' 6" x 14' 0" (3.81m x 4.27m)

**THIRD BEDROOM**

11' 0" x 13' 5" (3.35m x 4.09m)

**FAMILY BATHROOM**

7' 7" x 6' 6" (2.31m x 1.98m)

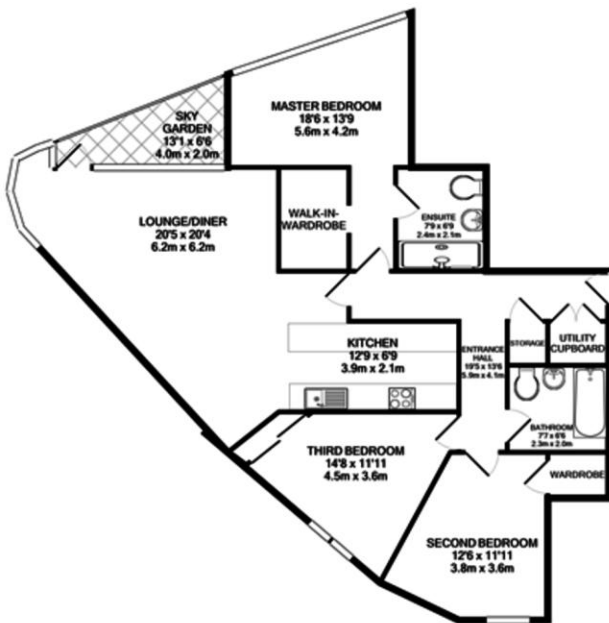
**PARKING**

The property boasts one secure & allocated parking space.

**AREA**

Beetham Tower is one of Birmingham's most iconic buildings and is situated in a central location being just a 5 minute walk to New Street Station. There are plenty of bars and restaurants to be found in the local vicinity as well as being a 0.5 miles walk to the ever popular Brindley Place.

This fantastic apartment needs to be viewed to fully appreciate the space and views on offer.



**TOTAL APPROX. FLOOR AREA 1248 SQ.FT. (115.9 SQ.M.)**  
 Whilst every attempt has been made to ensure the accuracy of the floor plan contained here, measurements of doors, windows, rooms and any other items are approximate and no responsibility is taken for any error, omission, or mis-statement. This plan is for illustrative purposes only and should be used as such by any prospective purchaser. The services, systems and appliances shown have not been tested and no guarantee as to their operability or efficiency can be given.  
 Made with Metropix G2021

Address: 3803 BEETHAM TOWER, 10 HOLLOWAY CIRCUS QUEENS...  
 RRN: 0380-2279-0040-2209-6551

