

## Block 4 The Mint

Jewellery Quarter

B18 6EA

Asking Price Of **£220,000**

*Luxury One Bedroom Apartment*

*Grade II Listed*

*Three Secure & Allocated Tandem Parking Space*

*560 Sq. Ft.*



## Property Description

**DESCRIPTION** A luxurious one bedroom, spanning over 560 Sq. Ft. located within the prestigious, Mint Development within Jewellery Quarter. This gorgeous top floor apartment has been modernised throughout and boasts stunning original features. Which include: high ceilings, decorative skirting boards, original style radiators, chrome and stainless steel fittings, real oak flooring, integrated Bosch kitchen appliances and Burlington bathrooms. Forming part of the sought after Mint Development this apartment benefits from three secure allocated parking spaces and also offers a high level of security with access via coded doors.

**ENTRANCE HALL** 5' 4" x 11' 5" (1.63m x 3.48m)

**LIVING ROOM** 10' 4" x 15' 4" (3.15m x 4.67m)

**KITCHEN** 13' 2 (Max)" x 12' 0 (Max)" (4.01m x 3.66m)

**MASTER BEDROOM** 12' 0" x 13' 10" (3.66m x 4.22m)

**WALK - IN - WARDROBE** 8' 4" x 4' 4" (2.54m x 1.32m)

**FAMILY BATHROOM** 7' 1" x 7' 7" (2.16m x 2.31m)

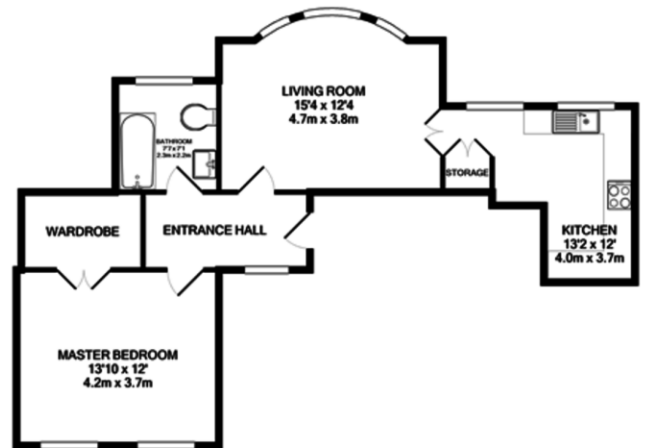
**PARKING** The property boasts three secure & allocated parking spaces.

**AREA** The property is located in the heart of Birmingham's Jewellery Quarter.

The Jewellery Quarter is a designated conservation area and proposed World Heritage Site and is already a prestigious and highly desired part of Birmingham. It is experiencing further development as some of the old factories are converted into apartments, restaurants and shops. It is only a short distance to all that Birmingham City Centre has to offer including the Colmore Business District.

The City Centre offers some of the best shopping in the country. The famous

## Floor Layout



**TOTAL APPROX. FLOOR AREA 560 SQ.FT. (52.0 SQ.M.)**  
 Whilst every attempt has been made to ensure the accuracy of the floor plan contained here, measurements of doors, windows, rooms and any other items are approximate and no responsibility is taken for any error, omission, or mis-statement. This plan is for illustrative purposes only and should be used as such by any prospective purchaser. The services, systems and appliances shown have not been tested and no guarantee as to their operability or efficiency can be given.  
 Made with Metropix ©2021

Total approx. floor area 560 sq ft (52 sq m)

Whilst every attempt has been made to ensure the accuracy of the floor plan contained here, measurements of doors, windows, rooms and any other items are approximate and no responsibility is taken for any error, omission, or mis-statement. This plan is for illustrative purposes only and should be used as such by any prospective purchaser. The services, systems and appliances shown have not been tested and no guarantee as to their operability or efficiency can be given. Made with Metropix ©2019.

%epcGraph\_c\_1\_168%



Birmingham City Centre Branch

0121 6044060

info@jameslaurenceuk.com

37-39 Ludgate Hill, Birmingham, B3 1EH

*JL*  
**James Laurence**

*Agents Note: Whilst every care has been taken to prepare these sales particulars, they are for guidance purposes only. All measurements are approximate are for general guidance purposes only and whilst every care has been taken to ensure their accuracy, they should not be relied upon and potential buyers are advised to recheck the measurements*