

# Heritage Court

Jewellery Quarter

B18 6HU

Guide Price **£290,000**

*Stunning Duplex Apartment*

*Secure & Allocated Parking*

*Two-Bedroom Apartment*

*1065 Sq. Ft.*



### Property Description

**MODERN METHOD OF AUCTION** This property is for sale under Traditional Auction terms. Should you view, offer or bid on the property, your information will be shared with the Auctioneer, iamsold.

With this auction method, an immediate exchange of contracts takes place with completion of the purchase required to take place within 28 days from the date of exchange of contracts.

On exchange of contracts, the buyer is required to make a payment of a 10% deposit, sign a reservation agreement and make payment of a non-refundable Reservation Fee of 4.80% of the final agreed sale price including VAT, subject to a minimum of £6,000.00 including VAT. The Reservation Fee is paid in addition to the agreed purchase price and is considered as part of the chargeable consideration for the property in the calculation for stamp duty liability.

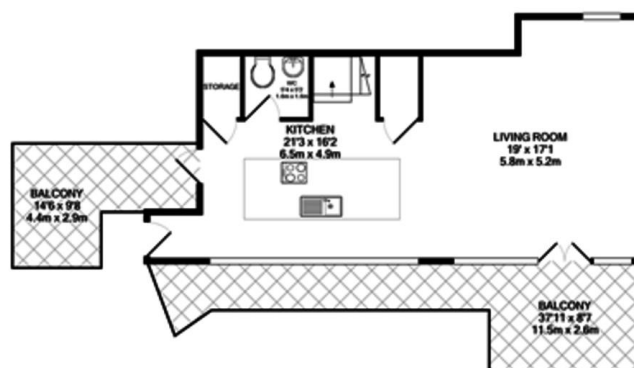
Buyers will be required to go through an identification verification process with iamsold and provide proof of how the purchase would be funded.

This property has a Buyer Information Pack which is a collection of documents in relation to the property. The documents may not tell you everything you need to know about the property, so you are required to complete your own due diligence before bidding. A sample copy of the Reservation Agreement and terms and conditions are also contained within this pack.

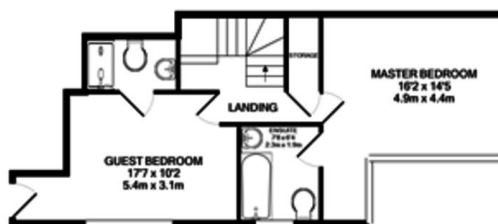
The buyer will also make payment of £300.00 including VAT towards the preparation cost of the pack, where it has been provided by iamsold. The property is subject to an undisclosed Reserve Price with both the Reserve Price and Starting Bid being subject to change.

**DESCRIPTION** The view with the WOW factor! This large penthouse duplex apartment, set over the fourth and fifth floors of the prestigious Heritage Court development situated in the heart of the Jewellery Quarter is an apartment not

### Floor Layout



GROUND FLOOR



Total approx. floor area 1,065 sq ft (99 sq m)

Whilst every attempt has been made to ensure the accuracy of the floor plan contained here, measurements of doors, windows, rooms and any other items are approximate and no responsibility is taken for any error, omission, or mis-statement. This plan is for illustrative purposes only and should be used as such by any prospective purchaser. The services, systems and appliances shown have not been tested and no guarantee as to their operability or efficiency can be given. Made with Metropix ©2019.

Energy Efficiency Rating		Current	Potential
Very energy efficient - lower running costs			
(92-100)	<b>A</b>		
(81-91)	<b>B</b>		
(69-80)	<b>C</b>		
(55-68)	<b>D</b>		
(39-54)	<b>E</b>		
(21-38)	<b>F</b>		
(11-20)	<b>G</b>		
Not energy efficient - higher running costs			
		68	72

England, Scotland & Wales EU Directive 2002/91/EC



Birmingham City Centre Branch

0121 6044060

info@jameslaurenceuk.com

37-39 Ludgate Hill, Birmingham, B3 1EH



*Agents Note: Whilst every care has been taken to prepare these sales particulars, they are for guidance purposes only. All measurements are approximate and for general guidance purposes only and whilst every care has been taken to ensure their accuracy, they should not be relied upon and potential buyers are advised to recheck the measurements*