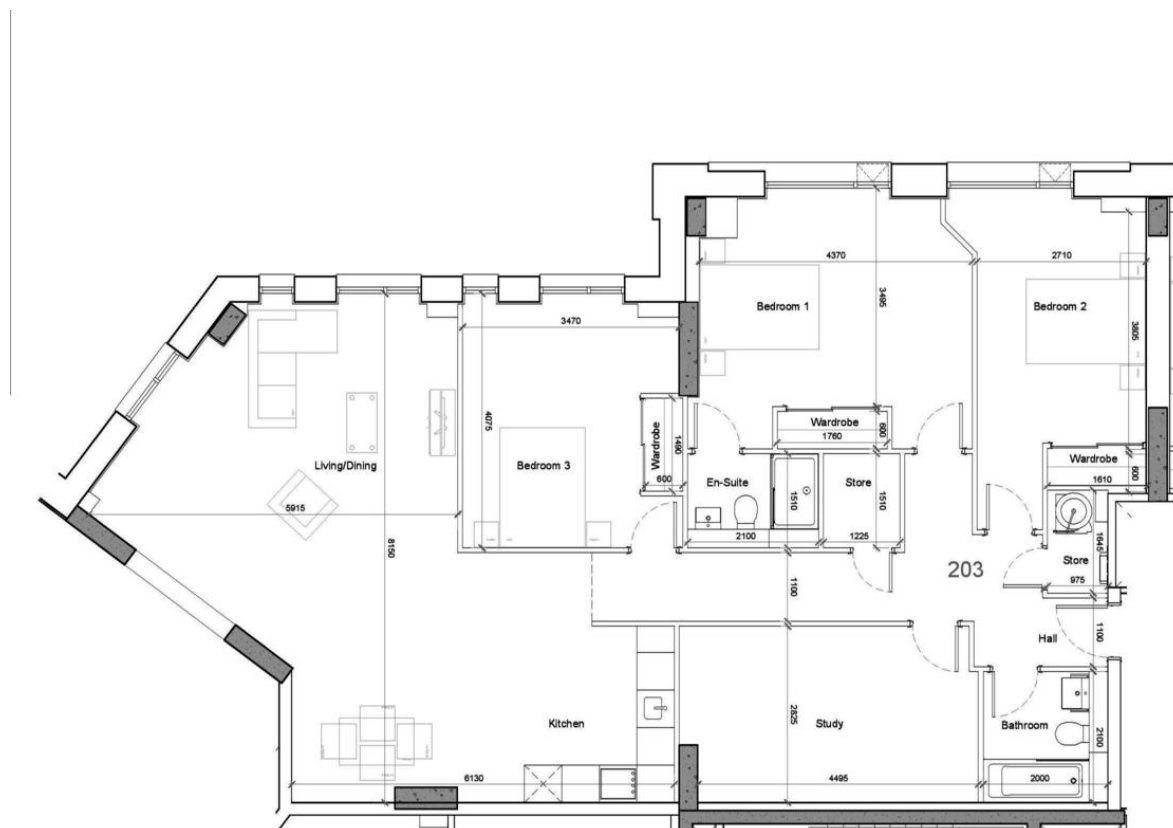




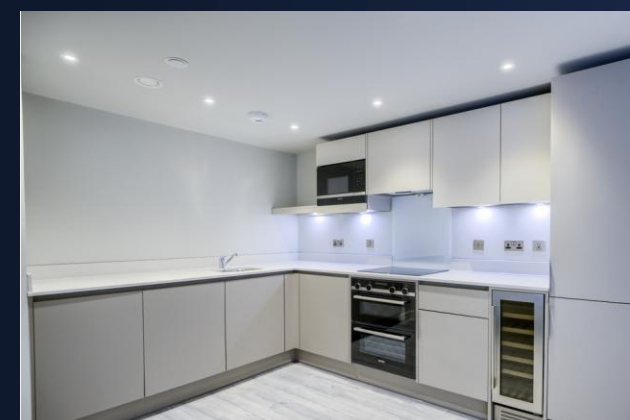
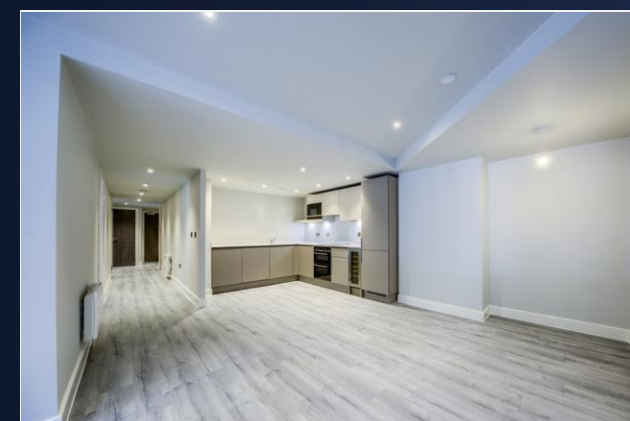
Floor Layout



Total approx. floor area 1,378 sq ft (128 sq m)

Whilst every attempt has been made to ensure the accuracy of the floor plan contained here, measurements of doors, windows, rooms and any other items are approximate and no responsibility is taken for any error, omission, or mis-statement. This plan is for illustrative purposes only and should be used as such by any prospective purchaser. The services, systems and appliances shown have not been tested and no guarantee as to their operability or efficiency can be given. Made with Metropix ©2019.

Agents Note: Whilst every care has been taken to prepare these sales particulars, they are for guidance purposes only. All measurements are approximate and for general guidance purposes only and whilst every care has been taken to ensure their accuracy, they should not be relied upon and potential buyers are advised to recheck the measurements



St. Martins Place

169 Broad Street
B15 1EB

Asking Price Of **£545,000**

- Three-Bedroom Apartment
- ****LUXURIOUS APARTMENT - AVAILABLE NOW****
- Second Floor Apartment
- 1378 Sq. Ft.



St. Martins Place,
169 Broad Street, Birmingham City Centre, B15 1EB
Asking Price Of £545,000

Property Description

DESCRIPTION

****LUXURIOUS APARTMENT - AVAILABLE NOW****

A fantastic opportunity to purchase a brand new, second floor, three bedroom apartment in St Martin's Place.

St Martin's Place is Birmingham's most exclusive luxury residential development, located in one of the city's highest sought-after postcodes, minutes from the main business and professional district. 228 exquisitely designed, spacious apartments complete with smart features, and impressive floor to ceiling windows that create a welcoming, light ambience, St Martin's Place exudes style and sophistication.

An unrivalled destination within the second city, all residents benefit from access to the first-class services of the neighbouring Park Regis Hotel, coupled with a full suite of exclusive on site and hotel facilities including state-of-the-art gym, WiFi lounge, private cinema, spa, bar and restaurant. These landmark luxury residences offer a truly unique living experience in the heart of the second city, designed to appeal to the most discerning, executive tenant.

These landmark luxury residences offer a truly unique living experience in the heart of the second city, designed to appeal to the most discerning, executive tenant.

St Martins Place epitomises the ultimate in luxury, high end city living inviting residents to live like a VIP in the heart of Birmingham, with an array of hotel services at their fingertips. Its destination entrance creates a hotel style arrival experience, welcoming you into an impressive grand double height lobby with sumptuous interior features and exceptional concierge service.



A FIRST FOR BIRMINGHAM

St Martins Place is the first development to bring private superior hotel services to Birmingham's executive residential sector. Residents benefit from an unrivalled menu of available services from the neighbouring Park Regis Hotel, ordered as required via an exclusive hotel app or the onsite, 24-hour concierge. With options including room service, ironing and dry cleaning, for the busy professional this means peace of mind that their home doesn't become neglected in favour of their busy work life, and they need never be short of a freshly pressed suit.

SERVICES INCLUDE:

- * Apartment cleaning and bed-turning
- * Dry cleaning
- * Ironing
- * Room service including food & beverage

PREMIUM LIFESTYLE

Residents of St Martins Place benefit from numerous private and hotel amenities, accentuating the premium lifestyle this exceptional development provides.

INSIDE ST MARTINS PLACE:

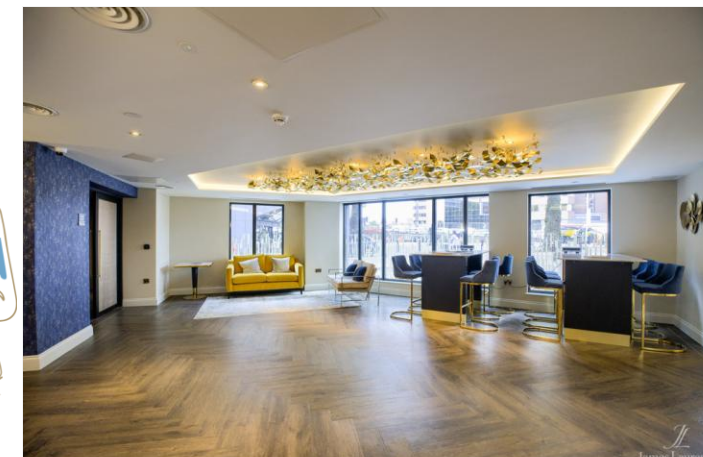
- * Private state-of-the-art gym available 24 hours allowing residents to fit activity around a busy lifestyle
- * Private cinema for residents to enjoy the full cinema experience at their convenience
- * WiFi lounge providing free WiFi access and a light, airy communal area for residents to use at their leisure

INSIDE PARK REGIS HOTEL: *

- * Spa and treatment rooms
- * Bar and restaurant

SMART WAY OF LIVING

Convenience and efficiency are at the top of the list for any savvy homeowner or tenant. Every apartment in St Martins Place has high speed internet. In addition a keyless locking system making entry and exit more secure. All apartments feature; a video entry system, 24 hour concierge, secure key fob entry to the building and private access to the gym, WiFi lounge and cinema room. Plus CCTV to all external and selected internal areas providing peace of mind.



**To book a viewing
of this property:**

Call:
0121 6044060

Email:
info@jameslaurenceuk.com

