



St Pauls Place

Jewellery Quarter

B3 1FQ

Asking Price Of **£275,000**

Stunning Two Bedroom Apartment

Fifth Floor

731 Sq. Ft.

Secure & Allocated Parking



Property Description

DESCRIPTION A fantastic opportunity to acquire a two-bedroom apartment situated in the prestigious St. Pauls Place Development. This well-appointed apartment offers approximately 731 Sq. Ft. of accommodation.

The property is nestled in the heart of the jewellery quarter on St Pauls Square, within easy reach of Birmingham City Centre and with easy access to New Street Station.

The property features a large open plan living/dining room with fully fitted kitchen, master bedroom, guest bedroom, family bathroom and a secure allocated parking space via a remote controlled gate. The development also benefits from 24 hour concierge. This is a rare opportunity to procure a fantastic apartment in an incredibly popular development, in Birmingham's most popular area.

ENTRANCE/HALLWAY

STORAGE ROOM

OPEN PLAN LIVING & KITCHEN AREA 24'5" x 11'1" (7.44m x 3.38m)

MASTER BEDROOM 16'1" x 9'6" (4.9m x 2.9m)

GUEST BEDROOM 13'6" x 8'8" (4.11m x 2.64m)

FAMILY BATHROOM

PARKING The property boasts one secure and allocated parking space.

AREA The property is located in the heart of Birmingham's Jewellery Quarter, just off St Paul's Square and close to the canal towpaths.

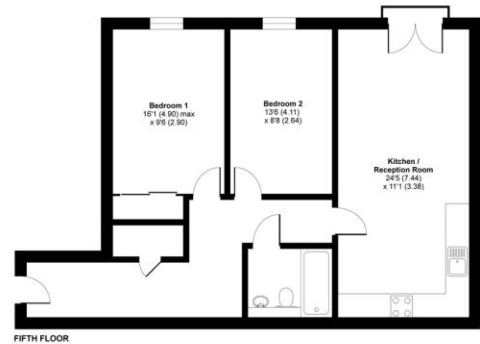
The Jewellery Quarter is a designated conservation area and proposed World Heritage Site and is already a prestigious and highly desired part of Birmingham. It is experiencing further development as some of the old factories are converted into apartments, restaurants and shops. It is only a short distance to all that Birmingham City Centre has to offer including the Colmore Business District.

Floor Layout



St Pauls Place, St Pauls Square, Birmingham, B3

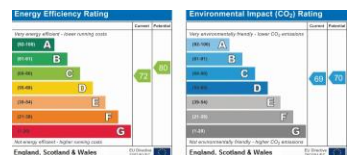
Approximate Area = 777 sq ft / 72.1 sq m
For identification only - Not to scale



Certified Property Measurement
Floor plan produced in accordance with RICS Property Measurement Standards incorporating International Property Measurement Standards (IPMS) (Residential). © 2019 James Laurence
Produced for Metropix REF: 645317

Total approx. floor area 731 sq ft (68 sq m)

Whilst every attempt has been made to ensure the accuracy of the floor plan contained here, measurements of doors, windows, rooms and any other items are approximate and no responsibility is taken for any error, omission, or mis-statement. This plan is for illustrative purposes only and should be used as such by any prospective purchaser. The services, systems and appliances shown have not been tested and no guarantee as to their operability or efficiency can be given. Made with Metropix ©2019.



Birmingham City Centre Branch

0121 6044060

info@jameslaurenceuk.com

37-39 Ludgate Hill, Birmingham, B3 1EH

James Laurence

Agents Note: Whilst every care has been taken to prepare these sales particulars, they are for guidance purposes only. All measurements are approximate and for general guidance purposes only and whilst every care has been taken to ensure their accuracy, they should not be relied upon and potential buyers are advised to recheck the measurements