



The New School House

Jewellery Quarter

B1 3BX

Asking Price Of **£220,000**

Stunning One-Bedroom Apartment

538 Sq. Ft.

High Specification Throughout

Completion Expected For Q2 2022



Property Description

DESCRIPTION The Copperworks and The New School House is an exciting new community of 93 homes, comprises a range of apartments, duplexes and townhouses. Some are new-build, others form part of the restoration of the courtyard, the Grade II listed former brass works, dating back to 1854.

This exciting new development bringing with it history and character, will be a major new address for Birmingham's Jewellery Quarter.

Built with the strict conservation guidelines designed to preserve the heritage of the Jewellery Quarter, the development cleverly fuses its past industrial usage with a modern aesthetic to offer an array of homes full of character and charm.

Traversing Stone Street and Cannon Street and only half a mile from the Jewellery Quarter Metro, The Copperworks is an exciting opportunity to be a part of it is area's residential renaissance.

Built to reflect the surrounding architecture of the Jewellery Quarter, The Copperworks features traditional red brickwork with hints of copper and zinc, a nod to the materials so ubiquitous to the forgers and makers who gave the area its name. Deep reveal windows, dark contrasting surrounds, brick openings in the facade and open weave brickwork all combine to give an innovatively industrial appearance. Stylish residences both inside and out.

APARTMENT 16

SPECIFICATION

- Superior Designed Kitchens
- Glass white for island or handless cabinets
- Granite worktops, upstands and splash back behind hob
- Stainless steel integral 1.5 bowl sink
- Integrated Black or stainless appliances, including induction hob, fridge freezer, dishwasher and washer-dryer
- LED strip lighting under island units

- BATHROOM**
- Oak effect basin cabinet with white basin and mixer tap
 - Polished concrete style or similar ceramic wall and floor tiles - floor to ceiling in wet areas
 - Dual flush soft close WC with chrome flush
 - Shower head with rain head and hand shower in chrome
 - Heated designer towel rail

- GENERAL**
- Brushed stainless steel sockets and switches
 - Hardwood door apartment doors
 - Stone window sills

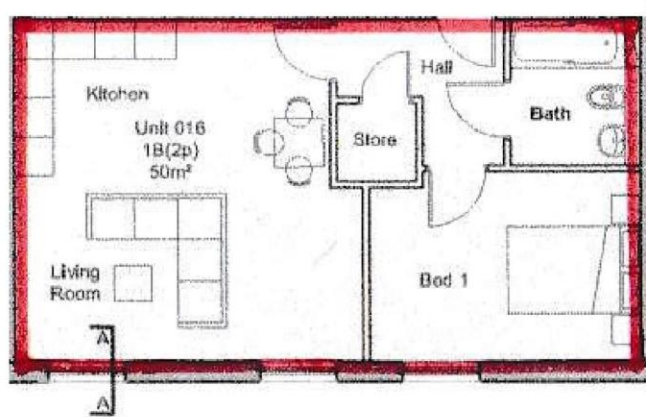
- SECURITY**
- Secured gates at section entrances
 - Digital access to main entry doors and gates
 - Colour video access screens in apartment hallways
 - Complimentary smoke alarms
 - Lockable letter boxes
 - Secured bike storage

- HEATING**
- Wall mounted electric panel heaters

- FLOORING**
- Engineered oak flooring in living, hallway and kitchen areas
 - Carpet in bedrooms
 - Ceramic and/or porcelain tiled bathrooms

- LIGHTING**
- recessed LED spotlights
 - Brushed steel light switches

Floor Layout



Total approx. floor area 538 sq ft (50 sq m)

Whilst every attempt has been made to ensure the accuracy of the floor plan contained here, measurements of doors, windows, rooms and any other items are approximate and no responsibility is taken for any error, omission, or mis-statement. This plan is for illustrative purposes only and should be used as such by any prospective purchaser. The services, systems and appliances shown have not been tested and no guarantee as to their operability or efficiency can be given. Made with Metropix ©2019.

%epcGraph_c_1_168%

