

## Camden Court

Jewellery Quarter

B1 3DE

Asking Price Of **£365,000**

*Stunning Two Bedroom Townhouse*

*1517 Sq. Ft.*

*Freehold*

*Secure & Allocated Parking*





**Property Description**

*DESCRIPTION \*\*FREEHOLD\*\* A fantastic opportunity to purchase a new build townhouse in the heart of the Jewellery Quarter, Camden Court comprises of six well-appointed townhouses with flexible space providing ample accommodation to suit today's modern living.*

ENTRANCE/HALLWAY

GUEST W.C.

LOUNGE 18'5" x 14'3" (5.61m x 4.34m)

KITCHEN/BREAKFAST ROOM 24'7" x 13'9" (7.49m x 4.19m)

TWO STORE CUPBOARDS

STAIRS LEADING TO FIRST FLOOR

LANDING

MASTER BEDROOM 23'4" x 14'5" (7.11m x 4.39m)

EN-SUITE BATHROOM

GUEST BEDROOM 17'9" x 10'9" (5.41m x 3.28m)

EN-SUITE BATHROOM

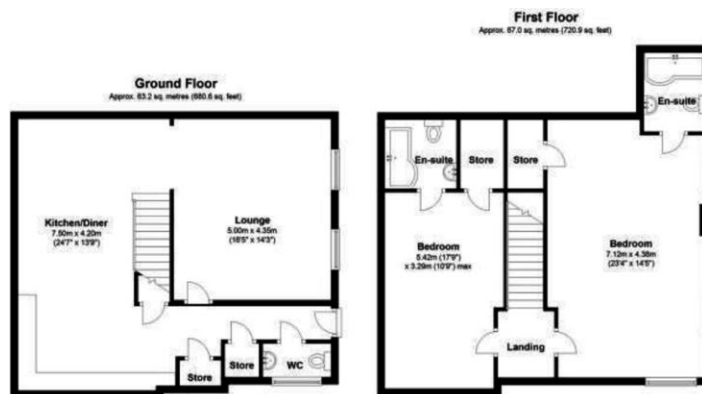
OUTSIDE

PATIO AREA

*PARKING* The property boasts one secure and allocated parking space.

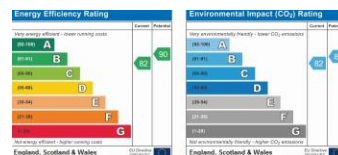
*AREA* The rich and diverse history of the Jewellery Quarter is encapsulated in the many listed landmark buildings and infrastructures still standing today. Features like the St Paul's Church, which sits on top of the last Georgian Square in Birmingham and the extraordinary Edwardian Chamberlain clock really depict the imprint of prior generations and showcase just how special this district is. The suburb still lives up to its name boasting the largest concentration of businesses producing jewellery in Europe. However, a recent resurgence of residential conversions and increased demand for the perks of inner-city living has seen the historic district transform into a unique residential urban village playing home to a hub of creative firms. The area is also territory to a plethora of boutique shops, restaurants and independent galleries and museums, which adds a real sense of community.

**Floor Layout**



Total approx. floor area 1,517 sq ft (141 sq m)

Whilst every attempt has been made to ensure the accuracy of the floor plan contained here, measurements of doors, windows, rooms and any other items are approximate and no responsibility is taken for any error, omission, or mis-statement. This plan is for illustrative purposes only and should be used as such by any prospective purchaser. The services, systems and appliances shown have not been tested and no guarantee as to their operability or efficiency can be given. Made with Metropix ©2019.



Birmingham City Centre Branch

0121 6044060

info@jameslaurenceuk.com

37-39 Ludgate Hill, Birmingham, B3 1EH



*Agents Note:* Whilst every care has been taken to prepare these sales particulars, they are for guidance purposes only. All measurements are approximate and for general guidance purposes only and whilst every care has been taken to ensure their accuracy, they should not be relied upon and potential buyers are advised to recheck the measurements