



## Pinewood Drive

Birmingham

B32 4LS

Offers In Excess Of **£210,000**

*Three-Bedroom Mid Terraced House*

*847 Sq. Ft.*

*Private Rear Garden With Rear Access*

*Off-Road Parking*

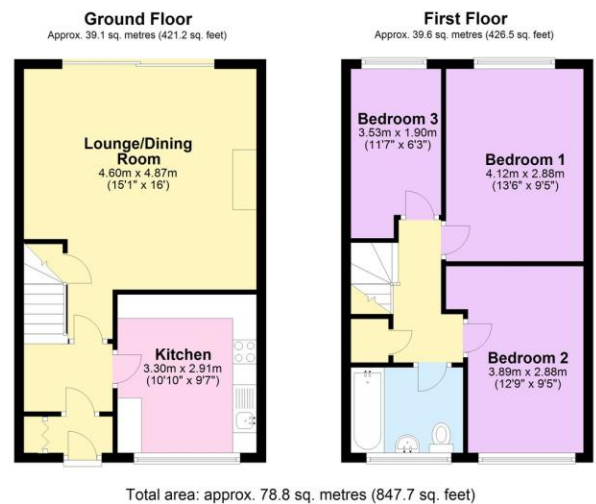


## Property Description

**DESCRIPTION** **\*\*NO UPWARD CHAIN\*\*** An immaculately presented three-bedroom Mid-Terrace property. Having a welcoming lounge, which leads onto the garden, separate kitchen. Benefitting from three further bedrooms, family bathroom and driveway providing ample off-road parking. A must view to avoid disappointment.

**LOCATION** Situated South West of Birmingham offer a number of sought after local schools including The Meadows & St Brigid's Primary Schools, Shenley Academy Secondary School & Sixth Form together with Turves Green Boys' & Girls' Secondary School in West Heath. Regular road and rail public services are available with railway stations located in Longbridge and Northfield providing access to Birmingham City Centre with the M5, junction 4 and M42, junction 2 being readily accessible. Other facilities include Northfield Library, Northfield Pool & Fitness Centre and a range of shopping facilities locally including the rapidly expanding and recently regenerated Longbridge Town Centre.

## Floor Layout



Total approx. floor area 847 sq ft (79 sq m)

Whilst every attempt has been made to ensure the accuracy of the floor plan contained here, measurements of doors, windows, rooms and any other items are approximate and no responsibility is taken for any error, omission, or mis-statement. This plan is for illustrative purposes only and should be used as such by any prospective purchaser. The services, systems and appliances shown have not been tested and no guarantee as to their operability or efficiency can be given. Made with Metropix ©2019.



Edgbaston Branch

0121 4565454

edgbaston@jameslaurenceuk.com

5 Chad Square, Hawthorne Road, Edgbaston,

Birmingham, West Midlands, B15 3TQ

*JL*  
James Laurence

*Agents Note: Whilst every care has been taken to prepare these sales particulars, they are for guidance purposes only. All measurements are approximate are for general guidance purposes only and whilst every care has been taken to ensure their accuracy, they should not be relied upon and potential buyers are advised to recheck the measurements*