



79 Cregoe Street

Birmingham City Centre

B15 2DP

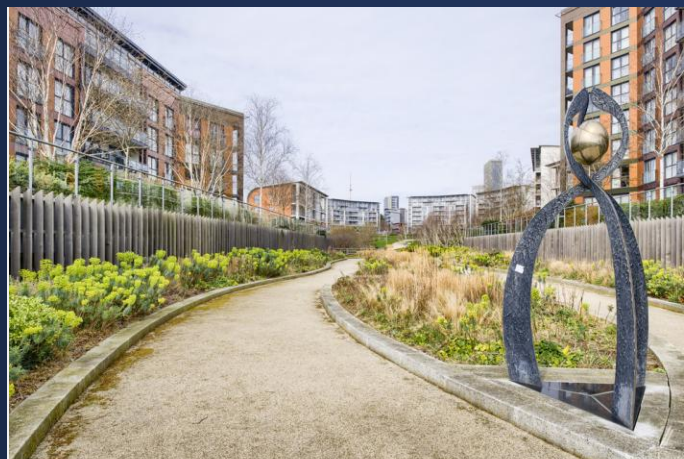
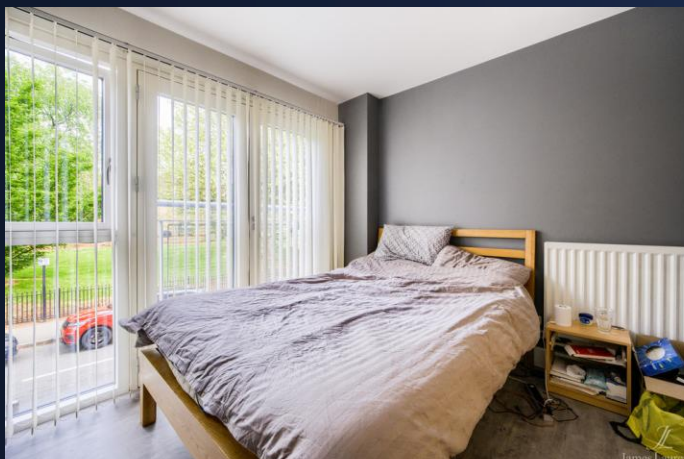
Asking Price Of **£185,000**

First Floor Apartment

670 Sq. Ft.

Beautiful Park Location

****EWS1 FORM GRANTED****

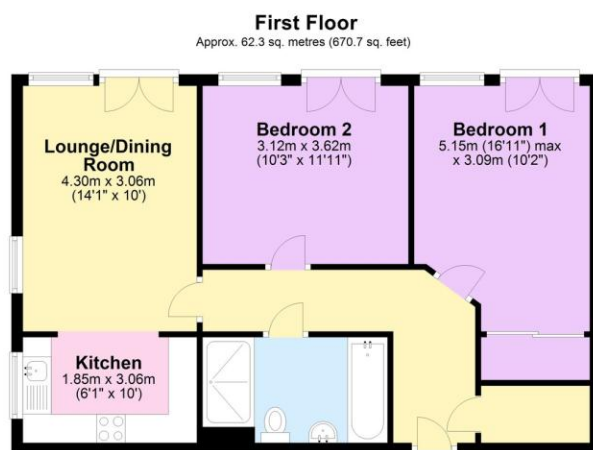


Property Description

DESCRIPTION This luxury apartment is located on the first floor of a popular phase of the Park Central estate. The apartment which boasts two double bedrooms, one spacious bathroom with the luxury of an open plan living/dining area complete with Juliette balcony, leading to a modern kitchen with built in appliances. One particular feature is large double glazed picture windows offering a wealth of natural light, whilst also featuring secure intercom access.

LOCATION The development is on the doorstep of a large green park for which the area gets its name, has a modern feel throughout and is located just a ten minute walk away from New Street Train, plus Five Ways station on the same line as University station, enabling ease of access to both University and Queen Elizabeth Hospital. The popular bar, restaurant and shopping complex of The Mailbox and neighbouring Cube are close by offering excellent recreational facilities, with The Bullring beyond. This location offers an ideal commute to the city's financial district making ideal for first time buyers/city working professionals but the savvy buy to let property investor should also take note in what is a buoyant local rental market.

Floor Layout



Total area: approx. 62.3 sq. metres (670.7 sq. feet)

Total approx. floor area 670 sq ft (62 sq m)

Whilst every attempt has been made to ensure the accuracy of the floor plan contained here, measurements of doors, windows, rooms and any other items are approximate and no responsibility is taken for any error, omission, or mis-statement. This plan is for illustrative purposes only and should be used as such by any prospective purchaser. The services, systems and appliances shown have not been tested and no guarantee as to their operability or efficiency can be given. Made with Metropix ©2019.



Birmingham City Centre Branch

0121 6044060

info@jameslaurenceuk.com

37-39 Ludgate Hill, Birmingham, B3 1EH



Agents Note: Whilst every care has been taken to prepare these sales particulars, they are for guidance purposes only. All measurements are approximate and for general guidance purposes only and whilst every care has been taken to ensure their accuracy, they should not be relied upon and potential buyers are advised to recheck the measurements