



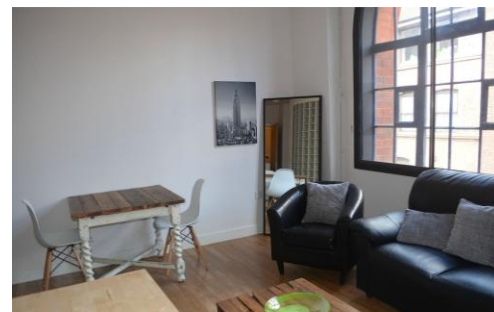
Derwent Foundry

5 Mary Ann Street, BIRMINGHAM, West Midlands, B3 1BG

£675 pcm

Property Summary

Located just off the lovely St Paul's Square, this contemporary second floor studio is the ideal property for city professionals looking to live within walking distance to all transport links and City Centre amenities. The property boasts a spacious hallway with ample storage, open plan living/kitchen area, family bathroom, and although classed as a studio has the bonus of a separate bedroom area.



%epcGraph_c_1_245%

- Open plan living/kitchen area
- Family bathroom
- Separate bedroom area
- Electric heating
- Ample storage
- Secure intercom entry system
- Second floor
- Just off St Paul's Square
- Short walk to financial district
- Snow Hill and New Street train stations close by

37-39 Ludgate Hill
Birmingham
B3 1EH

www.jameslaurenceuk.com
info@jameslaurenceuk.com
0121 6044060

Agents Note: Whilst every care has been taken to prepare these sales particulars, they are for guidance purposes only. All measurements are approximate and for general guidance purposes only and whilst every care has been taken to ensure their accuracy, they should not be relied upon and potential buyers are advised to recheck the measurements